



保華集團有限公司
PYI Corporation Limited

(於百慕達註冊成立之有限公司)
(Incorporated in Bermuda with limited liability)

股份代號 Stock Code : 0498.HK



ENVIRONMENTAL, SOCIAL
AND GOVERNANCE REPORT
環境、社會及管治報告

2018

CONTENTS

目錄

- 2 **About this Report**
關於本報告 
- 2 **Scope of this Report**
本報告的範圍
- 3 **PYI's approach to ESG risks, impacts and opportunities**
保華應對環境、社會及管治的風險、影響和機遇的方法
- 4 **ESG Governance Structure**
環境、社會及管治方面的管治架構
- 5 **Materiality Assessment and Stakeholders Engagement**
重要性評估和持份者參與
- 7 **Environmental Protection**
環境保護 
- 8 **Air Emissions**
氣體排放
- 9 **Sewage**
污水
- 10 **Waste Management**
廢棄物管理
- 11 **Use of Resources**
資源使用
- 14 **Key Performance Indicators — Environmental**
關鍵績效指標 — 環境
- 16 **Social**
社會 
- 18 **Employment**
僱傭
- 18 **Health and Safety**
健康與安全
- 20 **Development and Training**
發展及培訓
- 20 **Labour Standards**
勞工準則
- 20 **Supply Chain Management**
供應鏈管理
- 21 **Product Responsibility**
產品責任
- 21 **Anti-corruption**
反貪污
- 22 **Commitment to Community**
回饋社區

About This Report

關於本報告

Scope of this Report

In this report, “ESG” refers to the matters under the two subject areas, namely “Environmental (Subject Area A)” and “Social (Subject Area B)”, as set out in the Environmental, Social and Governance Reporting Guide in Appendix 27 to the Listing Rules (the “Guide”). Please refer to our Corporate Governance Report in 2018 Annual Report of PYI Corporation Limited (“PYI” or the “Company”), which discusses our performance in corporate governance.

The ESG information in this report covers material issues (which assessment process is set out in the section headed “Materiality Assessment and Stakeholders Engagement” below) of all of our business segments discussed in the Business Review in PYI’s 2018 Annual Report, with the exception of those business entities: (i) in which PYI has a 50% interest or less; and (ii) which ESG implications shall be insignificant to PYI and its subsidiaries (collectively the “Group”). The reporting period for the ESG information is from 1 April 2017 to 31 March 2018 (the “Reporting Period”).

本報告的範圍

在本報告中，「環境、社會及管治」指的是根據上市規則附錄27《環境、社會及管治報告指引》(「指引」)所載兩個主要範疇下的事項，即「環境(主要範疇A)」和「社會(主要範疇B)」。關於企業管治的表現請參考保華集團有限公司(「保華」或「本公司」)2018年報中的企業管治報告。

除了(i)保華持有權益等於或少於50%的業務實體；及(ii)其在保華及其附屬公司(統稱「集團」)的環境、社會及管治影響不重大的業務實體之外，本報告中的環境、社會及管治資料涵蓋了保華2018年報中業務審視部分討論的所有業務分部的重要事項(其評估過程在以下標題為「重要性評估和持份者參與」的章節中列明)。本報告包含了2017年4月1日至2018年3月31日期間(「報告期間」)的環境、社會及管治資料。

About This Report 關於本報告

PYI's approach to ESG risks, impacts and opportunities

We consider ourselves duty-bound to assess and manage all foreseeable risk factors as effectively as possible, as we believe entities that best manage ESG risks, impacts and opportunities are more financially sustainable in the long term and will deliver better long-term financial performance.

We recognize the need to consider ESG risks in our investment and the operation process of our project subsidiaries and their impact on financial performance and the communities in which both we and our project subsidiaries operate.

Our vision and strategy on ESG is set out broadly in our ESG Policy. In our ESG Policy, the guiding principles in respect of each ESG area (as set out in the Business Review of PYI's 2018 Annual Report) have been developed to provide guidance on our ESG management approach and strategy. Through dialogue with the management of the business units and other stakeholders, we develop strategic approaches to addressing ESG challenges and integrating them in business practices. We also monitor ESG performance through risk-assessment reviews and enhance awareness through training. Relevant findings and recommendations are reported to the Board.

We require all business units to implement the requisite level of risk management control to ensure compliance with our ESG Policy, taking into account business needs and local circumstances. Appropriate operational procedures and controls are in place and all employees are provided with relevant information, training and supervision to reduce and manage those risks. Strong emphasis is placed on preventing accidents and incidents, but should they happen we have appropriate emergency plans and they are rehearsed routinely.

Business units are required to perform control self-assessments annually to assess the effectiveness of their systems of internal control. The control self-assessment is performed in the form of a questionnaire which includes ESG matters. The approach on reviewing the effectiveness of these risk management and internal control systems is discussed under the section headed "Review of Risk Management and Internal Control Systems" of the Corporate Governance Report in PYI's 2018 Annual Report.

保華應對環境、社會及管治的風險、影響和機遇的方法

我們認為有責任盡可能有效地去評估和管理所有可預見的風險因素，因我們相信能有效管理環境、社會及管治的風險、影響和機遇之企業，長遠來看在財務上能更具可持續性且對長期的財務表現會更好。

我們意識到有必要考慮我們在投資上以及附屬項目公司在經營過程中的環境、社會及管治風險，以及它們在財務表現及我們和附屬項目公司經營的社區上的影響。

我們對於環境、社會及管治的願景和策略在我們的環境、社會及管治政策中已列明。在我們的環境、社會及管治政策中，和每個環境、社會及管治範疇（在保華2018年報的業務審視中列出）有關的指引原則已制定並為我們的環境、社會及管治管理方法和策略提供指引。通過與業務經營單位之管理層和其他持份者的對話，我們制定策略去應付環境、社會及管治挑戰並將它們融入業務經營中。我們亦通過審視風險評估的方式監管環境、社會及管治表現，並通過培訓增強意識。相關的發現和建議向董事局匯報。

我們要求所有的業務經營單位，結合經營需要和當地情況，執行必要程度的風險管理控制以確保符合我們的環境、社會及管治政策。適當的操作規章及控制措施都已制定且已為所有員工提供了相關資訊、培訓和指導以便減少和管理這些風險。強調的重點在於阻止意外和事故的發生，即使發生意外事故，我們備有適當的應急預案，並經過常規演練。

我們要求業務經營單位執行年度的內部監控自我評估以分析它們內部監控系統的有效性。內部監控自我評估是以問卷的方式進行，其中包括了有關環境、社會及管治事項。風險管理及內部監控系統有效性的審視方式，已在保華2018年報的企業管治報告中題為「風險管理和內部監控系統的檢討」這一章節進行討論。

About This Report 關於本報告

ESG Governance Structure 環境、社會及管治方面的管治架構



Board of Directors 董事局

- ▶ Has overall responsibility for PYI's ESG strategy and reporting
對保華的環境、社會及管治策略及匯報承擔全部責任
- ▶ Delegates the day-to-day responsibility for ESG-related matters to senior management and ESG Reporting Committee
將環境、社會及管治相關事宜的日常職責委託給高級管理層及環境、社會及管治報告委員會
- ▶ Approves ESG Policy and ESG Report
審批環境、社會及管治政策及環境、社會及管治報告

Audit Committee 審核委員會

- ▶ Reviews the effectiveness of risk management and internal control systems related to ESG matters
檢討與環境、社會及管治事項相關的風險管理和內部監控系統的有效性



Corporate Governance and Compliance Committee 企業管治及法規委員會

- ▶ Reviews ESG policies and practices developed by senior management and ESG Reporting Committee and makes recommendations to the Board
檢討由高級管理層及環境、社會及管治報告委員會所制定的環境、社會及管治政策及常規，並向董事局提出建議
- ▶ Reviews and monitors PYI's compliance with legal and regulatory requirements related to ESG matters and meets with the management to assess related compliance policies, programs and procedures
檢討及監察保華在遵守環境、社會及管治法律及監管規定方面的情况，並與管理層舉行會議，以評估相關的合規政策、方案及程序
- ▶ Investigates or causes to be investigated any significant instances of non-compliance or potential compliance violations that are reported to the Corporate Governance and Compliance Committee
調查或安排調查任何向企業管治及法規委員會舉報的重大違規或潛在違規事件
- ▶ Reviews ESG Report developed and prepared by senior management and ESG Reporting Committee
審閱由高級管理層及環境、社會及管治報告委員會所編製之環境、社會及管治報告

Senior Management and ESG Reporting Committee 高級管理層及環境、社會及管治報告委員會

- ▶ Develops PYI's ESG policies and practices
制定保華的環境、社會及管治政策及常規
- ▶ Designs, implements and monitors the risk management and internal control systems related to ESG matters
設計、實施和監察與環境、社會及管治事項相關的風險管理和內部監控系統
- ▶ Ensures compliance with legal and regulatory requirements related to ESG matters
確保遵守與環境、社會及管治方面相關的法律及監管規定
- ▶ Prepares ESG Report
編製環境、社會及管治報告



ESG Working Group 環境、社會及管治工作組

- ▶ Assists senior management and ESG Reporting Committee in developing ESG policies and practices and preparing ESG Report
協助高級管理層及環境、社會及管治報告委員會制定環境、社會及管治政策及常規和編製環境、社會及管治報告
- ▶ Assists senior management and ESG Reporting Committee in coordinating and implementing ESG policies and practices
協助高級管理層及環境、社會及管治報告委員會統籌及實施環境、社會及管治政策及常規

Departments and Business Units 部門及業務經營單位

- ▶ Complies with ESG policies and practices developed by senior management and ESG Reporting Committee
遵循由高級管理層及環境、社會及管治報告委員會制定的環境、社會及管治政策及常規
- ▶ Implements good operation practices and ensures ESG compliance in daily operations
實施良好營運操守並在日常操作中確保環境、社會及管治的合規性



About This Report 關於本報告

Materiality Assessment and Stakeholders Engagement

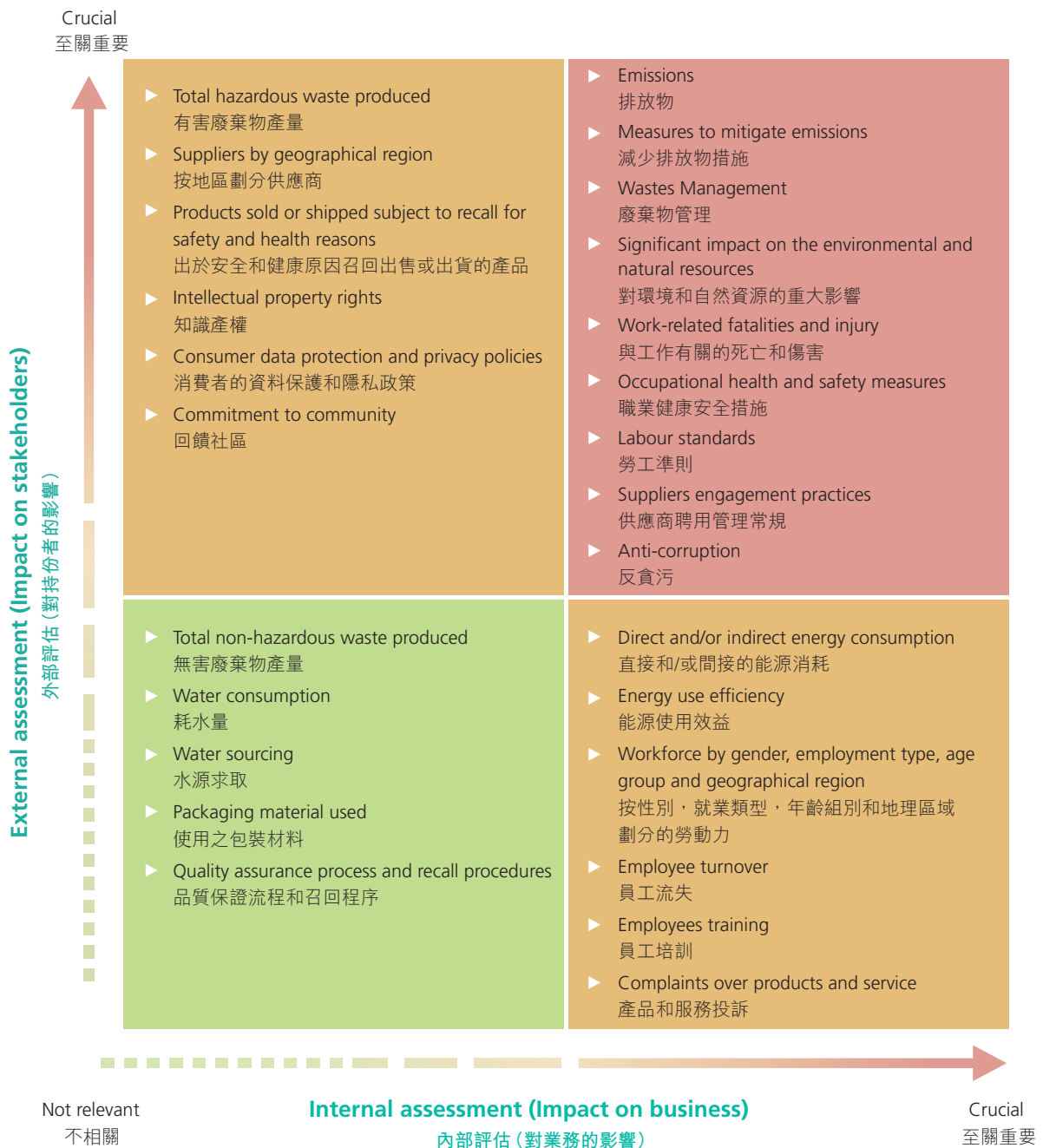
In deciding what ESG data or information is included in this report, we have taken into account the materiality of the relevant data or information, that is, its importance and relevance to PYI's business and operations.

The Materiality Matrix below shows the result of our materiality assessment process:

重要性評估和持份者參與

當決定何種環境、社會及管治數據或資料可納入本報告時，我們考慮相關數據或資料的重要性，即它對保華業務及經營是否重要和相關。

以下的重要性矩陣顯示了我們重要性評估過程的結果：



About This Report 關於本報告

The matrix is based on internal and external materiality assessment conducted in 2017 by engaging our key stakeholders through survey and the assessment results provide an important reference for our ESG management and information disclosure. Internal material assessment involved senior managers and other key employees of PYI. External assessment involved outside stakeholders such as relevant government and regulatory units, customers, suppliers and the communities where our businesses are operating. These stakeholders are identified through consulting PYI's various departments such as sales and marketing, procurement, legal and finance.

該矩陣以於2017年通過與關鍵持份者的問卷調查進行的內部和外部重要性評估為依據，評估結果為我們的環境、社會及管治管理和信息披露提供重要參考。內部重要性評估由保華的高級經理和其他關鍵員工進行，外部評估則涉及外部持份者進行，如相關政府及監管部門、客戶、供應商和我們經營業務所在的社區。該等持份者乃透過諮詢保華多個部門(例如銷售市場部、採購部、法律部及財務部)後識別。



Environmental Protection

環境保護

We strive to comply with all relevant environmental laws and regulations that are applicable to our various business operations. Our group legal team have been working closely with our business units to assess the impact of those promulgated environmental protection laws and regulations such as the “Environmental Protection Law of the PRC”, “Prevention and Control of Atmospheric Pollution of the PRC”, “Prevention and Control of Water Pollution of the PRC”, “Prevention and Control of Environmental Pollution by Solid Waste” and “National Environmental Emergency Response Plan”, etc.

我們努力遵守所有適用於我們經營的各項業務上有關環境的法規。我們集團的法律團隊與我們的業務經營單位緊密合作，評估諸如《中華人民共和國環境保護法》、《中華人民共和國大氣污染防治法》、《中華人民共和國水污染防治法》、《中華人民共和國固體廢物防治法》及《國家突發環境事件應急預案》等已頒佈的環保法規的影響。



Windbreak and dust-controlling walls and water sprayers are set up at the bulk cargo yard of Yichang Port

設立於宜昌港散貨堆場的防風抑塵網及噴淋系統



Environmental Protection 環境保護

Policies to minimise the environmental impacts from operations have been established and updated promptly in accordance with the aforesaid laws and regulations. Moreover, a reporting system has been developed and all our business operating units are required to report promptly of any significant non-compliance issues including those relating to environment.

During the Reporting Period, there was no material non-compliance with applicable laws and regulations relating to environment that could have a significant impact on PYI.

Air Emissions

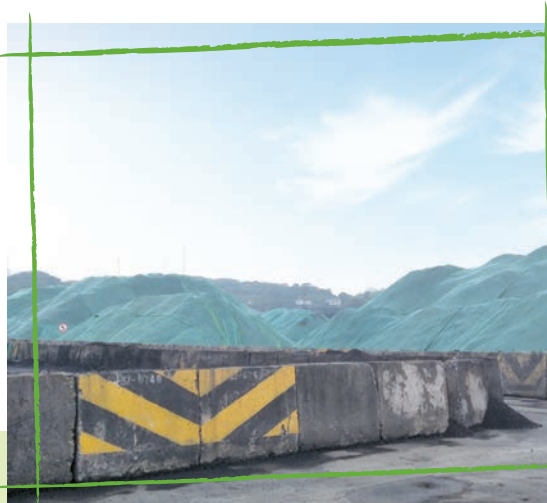
By its nature, various emission sources that can be identified in connection with operation of ports and logistics have negative impact on air quality. For example, sulphur oxide (SOx) and nitrogen oxide (NOx) are generated by fuel consumption of vessels, trucks and cargoes handling equipment. Inside the port areas and in the surrounding areas, there are dust and other airborne particles generated from cargo movement (in particular for those uncontainerized cargoes) through vehicles, vessels, trains, cargo handling equipment as well as from stationary sources such as storage of coal piles. Greenhouse gas that generated from the combustion of fuels from the above mobile sources contribute also to global warming.

我們已經制定了減少經營造成環境影響的政策並根據上述法規進行及時更新。此外，我們建立了一項匯報系統，所有業務經營單位都要及時匯報任何重大違法事項，包括與環境有關的違規事項。

在報告期間，沒有發生違反有關環境法規且可能對保華產生重大影響的重大不合規事項。

氣體排放

基於業務性質，港口及物流經營中會發現各種污染物來源，對空氣品質產生負面影響。例如船舶、貨車和貨物裝卸設備消耗燃料所產生的硫氧化物(SOx)和氮氧化物(NOx)。在港區範圍內和港區周邊，車輛、船舶、火車和貨物裝卸設備移動運載貨物(特別是而非集裝箱運輸的貨物)及固定源如儲存的煤堆會產生粉塵和其他大氣懸浮顆粒。上述移動源的油品燃燒產生的溫室氣體同樣造成了全球暖化。



▲ *Covering stockpiles with tarps at the bulk cargo yard of Yichang Port*

用防水布覆蓋於宜昌港散貨堆場的堆料



Train unloading operation workshop and coal conveyor belts are sealed at Yichang Port



宜昌港火車卸煤操作車間及傳輸皮帶進行密封操作



Environmental Protection 環境保護

Various preventive and corrective measures are in place to tackle the above issues. Environmental impact assessments have been carried out for new construction projects to ensure simultaneous design, construction and use of pollution control facilities with the main works (i.e. the “Three Simultaneity”). Covering stagnant stockpiles with tarps, controlling vehicles’ speed and carriage as well as performing regular cleaning and maintenance of paved access roads have been performed to minimise the impact of fugitive dust. Facilities such as water spraying equipment, dust suppression truck, wheel washing bay and windbreak and dust-controlling walls at stockyards have been used and erected to control dust. Furthermore, in order to minimise greenhouse gas emission, national standard diesels have been used and regular maintenance has been performed on all vehicles, vessels and other cargo handling equipment.

Further mitigating measures such as extension of windbreak and dust-controlling walls, covering for all fixed conveyor belt system, reinforcement of high traffic routes and installation of dust monitoring system at both cargo operation areas and stockyards are to be implemented.

Sewage

In addition to domestic sewage, rain sewage and industrial sewage (such as wastewater from stockyard and machinery cleaning) are also generated in our ports and logistics operations. Sewage treatment facilities such as sediment tank and oil-water separation system have been set up and sewage are treated before they are reused or duly discharged.

Emergency response plans have been established for safety and pollution prevention in our ports and logistics businesses and emergency drills are carried out regularly.

我們已採取了各種防治及糾正的措施來應對上述問題。在建設新項目時，會進行環境影響評價，以確保防治污染的設施與主體工程能同時設計、同時施工、同時投產使用（即「三同時制度」）。我們亦採取了貨場覆蓋防水布，控制車速和載貨量，港區進出口路面進行定期清掃及維護等措施來減少揚塵造成的影響。灑水設備、抑塵車、車輪清洗間及貨場區的防風抑塵網等設施已安裝並投入使用來控制粉塵。此外，為了減少溫室氣體排放，所有車輛、船舶和其他貨物裝卸設備已使用符合國家標準的柴油，並進行定期維護。

而將實施的其他彌補措施還包括擴大防風抑塵網、覆蓋所有固定傳送帶系統、加固高流量路面，以及在貨物裝卸區域和貨物堆場安裝粉塵監控系統。

污水

除生活污水外，我們經營港口及物流的業務單位亦產生雨污水及工業污水（如堆場及清洗機械的廢水）。我們已設立沉澱池和油水分離系統等污水處理設施，污水經處理後方會再利用或正式排放。

我們已就我們的港口及物流業務有關安全及防治污染制定應急方案，並定期進行應急演練。



Environmental Protection 環境保護

Waste Management

The availability of suitable land for landfill is decreasing while concerns about environmental and health impacts of landfill sites and waste treatment (both hazardous and non-hazardous ones) are increasing. We endeavour to reduce the amount of waste (going to landfill or to be processed otherwise) by source reduction and to encourage reusing and recycling as much as possible.

Hazardous waste such as used engine oil and lubricant oil is required to be first stored at designated storage area and then collected by licenced contractors. Non-hazardous waste such as employee's domestic and office waste is collected by local eligible sanitary companies. To promote waste recycling by tenants, rubbish bins for recyclables and non-recyclables are set up in different areas in our Pioneer Technology Building located in Hangzhou.

廢棄物管理

適用於垃圾堆填的土地之供應正在減少，而有關垃圾堆填區及廢物處理（包括有害廢棄物和無害廢棄物）對環境和健康影響的關注正在增加。我們盡可能地透過源頭減廢及鼓勵再利用和回收利用廢棄物以減少將要堆填或處理之廢棄物的數量。

例如使用過之機油及潤滑油等有害廢物必須首先存放在指定的儲存區域，然後由持牌承包商收集。無害廢棄物如員工生活和辦公室廢棄物由當地合資格衛生公司收集。為鼓勵租戶回收利用廢物，我們位於杭州的先鋒科技大廈在不同區域設置可回收物和不可回收物的垃圾桶。



▲ Used engine oil and lubricant oil are identified and stored at designated container of Jiaxing International Feeder Port

嘉興內河國際碼頭將使用過的機油及潤滑油識別並集中儲存於指定的貨櫃內



▲ Recycling bins are placed at each floor of Hangzhou Pioneer Technology Building

於杭州先鋒科技大廈每個樓層放置的回收垃圾桶



Environmental Protection 環境保護

Use of Resources

Energy consumption has a direct effect on our environment, operational costs and exposure to fluctuations in energy supply and prices. On the other hand, water is becoming a precious resource especially under increasing pressure from factors such as drought, population increase and rising demand for industrial uses. Moreover, withdrawals of water from underground and from the rivers by some of our operation sites may also affect the environment and quality of life in that area. In view of this, we have adopted policies on the effective use of resources in accordance with the relevant requirements of "Energy Conservation of the PRC", "Water Law of the PRC" and "Mineral Resources Law of the PRC".

Various measures have been implemented to encourage energy-saving. The results of implementation of energy-saving plans are linked with the management's annual performance appraisal. In our operation sites, alternative cleaner and less greenhouse gas intensive fuels for our cargo handling equipment have been used such as replacement of quay container cranes from diesel cranes to electrical cranes. Energy inefficient cargo carriages (such as vehicle and vessel) have been upgraded in accordance with PRC national standard and their regular maintenance has been scheduled. Also, energy inefficient lighting in our terminals is in the process of being replaced by LED lights.

In office, efficient use of electrical appliances has been promoted and communicated to staff such as turning off of lighting during breaks and shutting down all appliances after office hours. Some of our offices are installed with temperature guide for switching on air-conditioners only when temperature has reached a pre-set level.

PYI participated in "Earth Hour 2018", the world's largest collective environmental action, again during the Reporting Period. All the non-essential lights and appliances in the office of our headquarter in Hong Kong were turned off at 8:30 p.m. on 24 March 2018 (Saturday) and encouraged all our staff together with their families and friends to join this campaign, in order to promote the concept of reduction of energy consumption and environment-caring.

資源使用

能源消耗對我們的環境、經營成本及能源供應和價格的變化產生直接影響。另一方面，尤其在乾旱、人口增長及工業需求增加等因素的壓力不斷增加下，水正變成一項珍貴的資源。此外，我們部分的經營地點從地下及江河取水可能對該區域內的環境和生活質素造成影響。因此，我們根據《中華人民共和國節約能源法》、《中華人民共和國水資源法》及《中華人民共和國礦產資源法》的有關規定採納了高效使用資源的政策。

為了鼓勵節約能源，我們採取了各項措施。節能計劃實施結果與管理層的年度經營表現評估相關聯。在我們的經營地點，我們改為使用更清潔和更少溫室氣體排放燃料的貨物裝卸設備，例如將使用柴油的碼頭集裝箱起重機更換為電動起重機。低效能源的車輛和船舶等貨物運輸工具已根據中國國家標準升級並按時定期保養。此外，低效能源的碼頭照明正陸續更換為LED燈。

在辦公場所，我們宣揚並向員工宣傳提高電器的使用效率，諸如休息期間關燈及下班後關閉所有電器等。我們的一些辦公場所已經安裝了溫控指引，當溫度達到預先設定的水平時空調才會啟動。

於報告期間，保華再次參與全球最大型的集體環保行動「地球一小時2018」。於2018年3月24日(星期六)晚上8時30分，我們位於香港的總部關掉辦公室內所有不必要的燈及電器，及鼓勵全體員工與親友一起支持是次活動，以推動減少能源消耗及愛護環境的理念。



Environmental Protection 環境保護

In June 2017, our Yichang Port launched an energy saving program with the theme of "Low Carbon Promotion at Ports". Yichang Port encouraged all staff to join the program in order to promote the reduction of energy consumption and to care for environment during daily operation and life.

於2017年6月，宜昌港展開了主題為「港口低碳發展」之節能減排活動。宜昌港鼓勵全體員工一起參與是次活動，以推動於日常工作及生活中減少能源消耗及愛護環境。



Energy saving program launched by Yichang Port in June 2017

於2017年6月，宜昌港展開節能減排活動

During the Reporting Period, our Jiaxing International Feeder Port joined a solar system pilot program and started generating electricity with solar panels installed on the roofs of its integrated building and the custom inspection warehouse. In addition to self-consumption, the electricity produced by the solar system was also supplied to local district through grid connection that helped to bring positive local environmental impact.

在報告期間，我們旗下的嘉興內河國際碼頭已加入一項太陽能系統試點計劃，並開始在其綜合大樓和海關檢查倉庫的屋頂上安裝太陽能板，以產生電力。除供自用外，該太陽能系統產生的電力亦通過電網連接為當地供電，有助為當地環境帶來正面影響。



Solar panels are set up on the roofs of integrated building and custom inspection warehouse at Jiaxing International Feeder Port

建於嘉興內河國際碼頭辦公綜合大樓及海關檢查倉庫屋頂上的太陽能板

Environmental Protection 環境保護

For water usage, measures such as efficient use of water have been promoted and communicated to staff. Water efficient fixtures and fittings such as showerheads, taps and hoses have been installed in some operation sites. In our LPG storage-tank farm, pools have been maintained to collect water from water pipes which is recycled for tank cooling during summer heat.

PYI is committed to managing all business operations with sensitivity to environmental protection. We will review our environmental protection practices from time to time and will continue to apply eco-friendly measures and practices in our operation.

在水利用方面，提升水利用效率的措施已實施並已向員工宣傳。諸如噴淋頭、水龍頭和水管等節水設備和裝置已在部分經營場所安裝。在液化石油氣儲配庫，我們設置了蓄水池來收集水渠中的水以便在夏季高溫時為儲罐降溫。

保華致力於管理所有業務經營單位時保持對環境保護的敏銳觸覺。我們將不時審視我們的環境保護工作，且繼續在我們的經營中實施綠色生態環境的措施和常規。



Environmental Protection

環境保護

Key Performance Indicators — Environmental Notes 1 & 6

關鍵績效指標 — 環境 附註1及6



ENVIRONMENTAL KPIs 環境關鍵績效指標	UNIT 單位	PORTS & LOGISTICS 港口與物流	PROPERTY 物業
Emissions 排放物			
Nitrogen oxides (NOx) 氮氧化物	Tonnes 噸	31.01	0.67
Sulphur oxides (SOx) 硫氧化物	Tonnes 噸	0.012	0.001
Particulate matter (PM) <small>Note 2</small> 顆粒物 <small>附註2</small>	Tonnes 噸	1.78	0.06
Greenhouse gas (GHG) — Scope 1 <small>Note 3</small> 溫室氣體 — 範圍1 <small>附註3</small>	Tonnes 噸	5,795.55	265.63
Greenhouse gas (GHG) — Scope 2 <small>Note 3</small> 溫室氣體 — 範圍2 <small>附註3</small>	Tonnes 噸	5,382.90	2,924.81
Greenhouse gas (GHG) emission — intensity (Scopes 1 and 2) 溫室氣體排放 — 密度 (範圍1及2)	Tonnes/10,000 Tonne Throughput 噸/10,000噸吞吐量	8.86	Not applicable 不適用
	Tonnes/Square Meter Gross Floor Area 噸/平方米 建築面積	Not applicable 不適用	0.07
Wastes 廢棄物			
Hazardous waste <small>Note 4</small> 有害廢棄物 <small>附註4</small>	Tonnes 噸	28.02	0.01
Non-hazardous waste <small>Note 5</small> 無害廢棄物 <small>附註5</small>	Tonnes 噸	253.97	50.31
Total waste — intensity 廢棄物總量 — 密度	Tonnes/10,000 Tonne Throughput 噸/10,000噸吞吐量	0.22	Not applicable 不適用
	Tonnes/Square Meter Gross Floor Area 噸/平方米 建築面積	Not applicable 不適用	0.001

Environmental Protection 環境保護

ENVIRONMENTAL KPIS 環境關鍵績效指標	UNIT 單位	PORTS & LOGISTICS 港口與物流	PROPERTY 物業
Energy consumption 能源消耗			
Gasoline 汽油	KWH 千瓦時	756,724	511,058
Diesel 柴油	KWH 千瓦時	19,966,070	130,890
Liquefied petroleum gas (LPG) 液化石油氣	KWH 千瓦時	187,680	358,360
Electricity 電力	KWH 千瓦時	8,186,620	4,161,357
Total energy consumption — intensity 能源消耗總量 — 密度	KWH/Tonnes 千瓦時／噸	23,069	Not applicable 不適用
	KWH/Square Meter Gross Floor Area 千瓦時／平方米 建築面積	Not applicable 不適用	107
Water consumption 用水			
Municipal water supplies 市政供水	Cubic Meter 立方米	40,310	84,218
Water drawn from river 從河道取水	Cubic Meter 立方米	184,339	0
Ground water 地下水	Cubic Meter 立方米	0	101,419
Total water consumption — intensity 水消耗總量 — 密度	Cubic Meter/10,000 Tonne Throughput 立方米／10,000噸吞吐量	178	Not applicable 不適用
	Cubic Meter/Square Meter Gross Floor Area 立方米／平方米 建築面積	Not applicable 不適用	3.84

Notes:

- Environmental KPIS in this data table reflect the data for the reporting period from 1 April 2017 to 31 March 2018.
- Particulate matter reported here refers to dust arising from fuel consumption by vehicles, trucks, vessels and cargo handling equipment.
- The source of our direct GHG emission (Scope 1) is from use of gasoline, diesel and LPG, while that of indirect GHG emission (Scope 2) is from consumption of purchased electricity and heat.
- Hazardous wastes are mainly used engine oil and lubricant oil for machinery maintenance and oily bilge water.
- Non-hazardous wastes are mainly employees' domestic and office wastes.
- PYI business has almost no environment impact regarding packaging material for finished products and therefore no relevant KPI is disclosed in the table.

附註：

- 本數據表內的環境關鍵績效指標反映了2017年4月1日至2018年3月31日報告期間的數據。
- 於此呈報的顆粒物指由車輛、火車、船舶和貨物裝卸設備消耗燃料所產生的粉塵。
- 我們的直接溫室氣體排放(範圍1)源自使用汽油、柴油及液化石油氣，而間接溫室氣體排放(範圍2)源自消耗所購買的電力和熱能。
- 有害廢棄物主要為使用過的機油及用於機械維護的潤滑油和含油艙底水。
- 無害廢棄物主要為員工生活和辦公室廢棄物。
- 保華業務幾乎沒有關於成品包裝材料的環境影響，因此表中並無披露相關的關鍵績效指標。



Social 社會



Credibility and reputation are invaluable assets for PYI which operates in diverse economic, social and cultural contexts. Therefore, we have developed common principles, values and responsibilities that guide our relations with the market, the communities in which we operate, the people who work with us and all those who have a legitimate interest in our activities.

可信度和商譽對運行在多元經濟、社會、文化下的保華來說是無價的資產，因此我們制定了用以指導我們與市場、營運所在社區、同事以及那些於我們業務活動中擁有合法權益的所有持份者的關係的共同準則、價值和責任。

In social context, PYI will maintain the following core values:

在社會領域下，保華將堅持以下核心價值：



Genuine

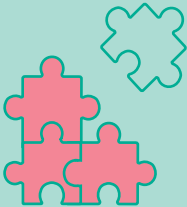
We are sincere, trustworthy and reliable.

Operating with integrity, being ethical and respecting others is at the heart of PYI's culture.

真誠

我們真誠、可靠及值得信賴。

誠信經營、崇尚道德和尊重他人是保華文化的中心。



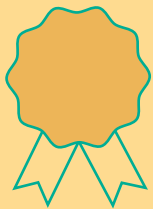
Involved

We are inclusive, open and actively engaged with our customers, partners, employees and the communities we serve.

People are our greatest asset.

包容

我們以包容、開放和積極的態度來接待我們的客戶、合作夥伴、僱員和服務的社區團體。人是我們最大的資產。



Exceptional

We are committed to creating exceptional experiences that delight our employees and customers.

At PYI, good enough is not good enough.

傑出

我們承諾創造一個使自己的僱員和客戶感到欣慰的出色經歷。

在保華，只有更好，沒有最好。

These core values reflect the importance that PYI attaches to the integrity, respect, responsibility, competence and safety in carrying out our business.

這些核心價值反映了保華以重視誠實、尊重、責任、能力和安全的態度來經營業務。

Social 社會

Employment

We believe that focusing on talent management and emphasizing staff engagement will in turn drive the growth of our business. Meanwhile, we have established policies to regulate compensation and dismissal, recruitment and promotion, working hours, rest periods, equal opportunity, diversity, anti-discrimination and other benefits and welfare in accordance with laws and regulations such as “Labour Law of the PRC”, “Labour Contract Law of the PRC”, “Social Insurance Law of the PRC” and “Provision of Minimum Wages”, etc.

In practices, a performance-based remuneration and appraisal system has been adopted to ensure fair pay to our employee and to attract and retain talents. Other than salary, regular staff welfare and benefits such as maternity and breastfeeding leaves, high temperature subsidies, etc., have also been provided.

During the Reporting Period, there was no material non-compliance with applicable laws and regulations relating to employment that could have a significant impact on PVI.

Health and Safety

We recognise the importance of occupational health and safety, and endeavour to provide a safe working environment to our staff by encouraging safety practices and enhancing their awareness through regular training and safety drills.

僱傭

我們堅信重視傑出的管理層和強調員工參與會帶來業務的增長。同時，我們根據《中華人民共和國勞動法》、《中華人民共和國勞動合同法》、《中華人民共和國社會保險法》及《最低工資規定》等法規，建立了相關制度來規定補償及解僱、招聘及晉升、工作時間、休假時間、平等機會、多元化、反歧視及其他的利益和福利。

在實踐中，我們採用以工作表現為基礎的薪酬和考核體系，以確保員工得到公平報酬並吸引和留住優秀人才。除了工資，我們還提供常規的員工福利如產假、哺乳假、高溫補貼等。

在報告期間，沒有發生對保華產生重大影響的重大勞動違規事項。

健康與安全

我們認識到職業健康與安全的重要性，並致力於為員工提供一個安全的工作環境，鼓勵安全操作並通過定期培訓和安全演練來增強員工的安全意識。



▲ *First aid training held at Xiao Yangkou*
於小洋口舉辦的急救培訓

Occupational health and safety policies have been established in accordance with relevant laws and regulations such as the “Law of the PRC on Work Safety”, the “Law of the PRC on Prevention and Control of Occupational Diseases” and “Fire Prevention Law of the PRC”, etc.

Various measures have been employed to ensure health and safety of our employees. Our ports and logistics operations have set up their safety committee or supervision department to conduct comprehensive supervision and management of work safety within their companies. Regular training and drills on safety and fire have been organised. Moreover, all employees engaged in specialty works (such as cargo handling equipment workers and workers in our LPG/CNG fueling stations) are required to be licenced. Annual health examination and sport activities have also been arranged to promote good health and well-being.

During the Reporting Period, there was no material non-compliance with applicable laws and regulations relating to occupational health and safety that could have a significant impact on PYI.

根據《中華人民共和國安全生產法》、《中華人民共和國職業病防治法》和《中華人民共和國消防法》等法規，我們制定了有關職業健康與安全的規章制度。

我們已採取各項措施保障員工的健康及安全。我們經營港口及物流的業務單位都已建立安全委員會或安全監督部門，在公司內部對安全生產進行全面的監督和管理。公司亦定期組織有關安全和消防方面的培訓及演練。此外，特殊工種(如貨物裝卸操作工、液化石油氣/壓縮天然氣加氣工)的員工需持證上崗。公司還提供年度健康體檢及安排各項體育運動來提高員工健康水平。

在報告期間，沒有發生對保華產生重大影響的重大職業健康及安全違規事項。

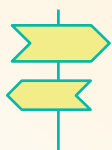
Fire drill at port operation area

於港口作業區的消防演練



Fire drill at LPG storage tank farm

於液化石油氣儲配庫的消防演練



Social 社會

Development and Training

We believe that continuous staff training and development is essential for the discharge of their duties and responsibilities effectively and efficiently. Our training and development programmes include but not limited to on-job training, internal seminars held by internal and outside professionals, etc. Staff at middle and senior levels are also encouraged to take external training and professional examinations with the provision of subsidies.

Our Hangzhou training centre is responsible for organising various regular internal training programmes and publication of monthly training newsletter for the Group. In addition to internal training programmes, we also encourage employees to take part in external courses such as seminars, discussions and conferences held by both governmental and professional bodies.

Further discussion on training provided to directors and senior management, and for certain training programmes forming part of our risk management and internal control systems can be found on pages 52 and 53 of PYI's 2018 Annual Report.

Labour Standards

We have established policies that strictly prohibit the employment of child and forced labour. Employee's right on working hours, holidays and annual leaves are strictly complied with relevant laws and regulations and have been promoted and communicated to all staff, especially to newly employed ones.

During the Reporting Period, there was no material non-compliance with applicable laws and regulations relating to labour standards could have a significant impact on PYI.

Supply Chain Management

We recognise that proper management of our supply chain could bring positive impact to our natural and social environment and so we strive to promote and communicate with our partners along the supply chains about our environmental and social practices. Policies and procedures have been established in our procurement and tendering process for our selection of capable and responsible suppliers and contractors for management of environmental and social risks of the supply chain.

During the Reporting Period, there was no significant incidents and irregularities relating to business ethics, environmental protection, and employment practices of our major suppliers and contractors.

發展及培訓

我們堅信，為了讓員工有效和高效地履行職責和責任，持續的員工培訓和發展是必要的。我們的培訓和發展項目包括但不限於工作中培訓、由內部和外部專家授課的內部講座等。我們還提供補貼鼓勵中高層管理人員參加外部培訓和專業考試。

我們杭州的培訓中心負責為集團組織各類常規的內部培訓及發行培訓月刊。除了內部的培訓項目，我們也鼓勵員工參與外部由政府 and 專業團體舉辦的講座、討論會和研討會。

有關提供予董事及高級管理人員之培訓，以及構成我們風險管理及內部監控系統有關的培訓描述，可參閱保華2018年報第52及53頁。

勞工準則

我們制定了制度嚴格杜絕使用童工及任何強制勞工，並嚴格根據相關法規執行有關工作時間、假期及年假等員工權利，並告知員工，特別是新僱用的員工。

在報告期間，沒有發生對保華產生重大影響的重大違反勞工準則的事項。

供應鏈管理

我們認識到，對供應鏈的良好管理能為我們的自然和社會環境帶來正面的影響，所以我們努力與供應鏈上的合作夥伴就我們的環境和社會行為增強溝通。我們建立了採購和招標的制度及程序來挑選能幹及負責任的供應商及承包商，以管理供應鏈中的環境及社會風險。

在報告期間，沒有與我們主要供應商及承包商的商業道德、環境保護及僱傭常規有關的重大事故及違規事項。

Product Responsibility

We commit to offering products and services with high standards of safety, quality and reliability as well as protecting the personal data of our customers so as to maintain their trust in us.

Policies have been established in accordance with relevant laws and regulations such as the “Product Quality Law of the PRC” and the “PRC Law on the Protection of Consumer Rights and Interests”. Quality management teams have been set up in our operations to conduct regular inspection, quality analysis or sample checks on products and services provided. For example, our LPG/CNG distribution operation in Wuhan, China has conducted sample tests of the LPG at various stages, for example, (i) before and after purchase; (ii) at its storage-tank farm; and (iii) subsequently stored and delivered to ensure the product quality. Various communication channels have also been established by the customer support team to collect information about customers’ satisfaction to the services and products they provided for operation improvement.

During the Reporting Period, there was no material non-compliance with applicable laws and regulations relating to product responsibility that could have a significant impact on PYI.

Anti-corruption

PYI believes that honesty, integrity and fair play are important company assets in business of PYI. We are committed to ensuring that PYI’s reputation is not tarnished by dishonesty, disloyalty or corruption. As outlined in our Code of Conduct, it is our policy that: no employee in the Group shall solicit and accept advantages from suppliers, customers, competitors or any person in connection with our business; and, under no circumstance shall any employee in the Group offer any advantage, without lawful authority or reasonable excuse, to any person as an inducement or reward in connection with that person’s work.

We encourage all employees to assist in tackling fraud, corruption and other malpractice, and to report any suspicions of bribery via one of the contacts provided through the enquiry and complaint procedures of the Group. We have established specific channels for the employees to report irregularities that come to their attention in confidentiality. We also have measures in place to ensure that no employee will ever suffer any disadvantage in the workplace as a result of reporting irregularities. The effectiveness of the procedures is reviewed and monitored by the Audit Committee of PYI.

During the Reporting Period, there was no material non-compliance with applicable laws and regulations relating to anti-corruption that could have a significant impact on PYI.

產品責任

我們承諾提供高標準的安全、品質和可靠的產品和服務，同時保護客戶的個人資料，以保持他們對我們的信任。

根據《中華人民共和國產品質量法》、《中華人民共和國消費者權益保護法》等法規，我們制定了相關的規章制度。在經營中我們建立了品質管制團隊來進行常規的品質檢測、產品和服務的品質分析及樣品檢驗。例如，我們在武漢的液化石油氣／壓縮天然氣零售業務，已執行各個階段的液化石油氣樣品檢測，如於(1)採購前和採購後；(2)在儲配庫；以及(3)隨後的存儲和運輸，以確保產品品質。設立售後團隊來收集客戶對服務及產品滿意度的資訊，建立各類溝通渠道來改進經營。

在報告期間，沒有發生對保華產生重大影響的重大產品責任違規事項。

反貪污

保華堅信，誠實、公正和公平在經營中是公司的重要資產。我們承諾確保保華的聲譽不被欺詐、失信和貪污所玷污。正如我們的《行為準則》所載：任何集團員工都不許從供應商、客戶、競爭對手以及與保華有業務聯繫的任何人士索取和收受好處；以及在任何情形下，集團內任何員工不得提供任何沒有合法授權或合理理由的好處給他人，作為與他工作相關的利誘或回報。

我們鼓勵所有員工協助阻止欺詐、貪污和其他不當行為，亦鼓勵通過信訪及投訴機制向集團的聯絡人舉報任何可疑的賄賂。我們為員工設有特殊途徑用以保密形式舉報引起他們關注的不當行為。我們也在採取措施確保員工不因舉報而在工作場所遭受任何不利。有關制度的有效性由保華的審核委員會來審核和監督。

在報告期間，沒有發生對保華產生重大影響的重大貪污違規事項。

Social
社會

Commitment to Community

We demonstrate strong commitment to community, focusing on education and youth development such as sponsoring educational exchange programs for Nantong’s secondary school students to Hong Kong for twelve years. Starting from 2017, we have also sponsored educational exchange program for Hong Kong’s secondary school students to Nantong and other cities in Jiangsu Province. During the Reporting Period, we donated, together with Paul Y. Engineering, HK\$1 million to Friends of Hope Education Fund to support their educational works in the Mainland and Hong Kong. For the tenth consecutive years, we were awarded with the title of “Caring Company” by the Hong Kong Council of Social Service in recognition to our corporate citizenship and our ongoing effort in caring the community. Our local operations also implemented local programs to fulfill our commitments to give back to the society and to enhance the relationships with the nearby communities, for example, in Yichang (Hubei Province, China), our local operation proactively supported poverty alleviation programs promulgated by the local government.

回饋社區

在回饋社區方面，我們竭力履行承諾，尤其著重教育和青少年發展方面，體現於贊助南通的中學生到香港進行學術交流活動達十二年。由2017年起，我們也贊助香港的中學生到南通及江蘇省之其他城市進行學術交流活動。在報告期間，保華連同保華建業，捐贈了100萬港元給「希望之友教育基金」，以支持香港和內地的教育發展。連續十年，我們獲得了香港社會服務聯會頒發的「商界展關懷」的稱號，以表彰我們的企業公民責任和我們對社區關愛的持續努力。我們內地的經營單位也同樣開展當地的各項活動來履行我們回報社會的承諾並加強與周邊社區的聯繫。例如，我們在宜昌（中國湖北省）的業務單位，積極參與當地政府發起的扶貧項目。



Poverty alleviation activities organized by Yichang Port

宜昌港組織的扶貧活動



Educational exchange programs for Hong Kong and Nantong students sponsored by PYI

保華贊助香港及南通學生之學術交流活動





保華集團有限公司
PYI Corporation Limited

(於百慕達註冊成立之有限公司)
(Incorporated in Bermuda with limited liability)

香港九龍觀塘鴻圖道 51 號保華企業中心 33 樓
33/F, Paul Y. Centre, 51 Hung To Road
Kwun Tong, Kowloon, Hong Kong
電話 Tel : +852 2831 8328
傳真 Fax : +852 2372 0641

www.pyicorp.com